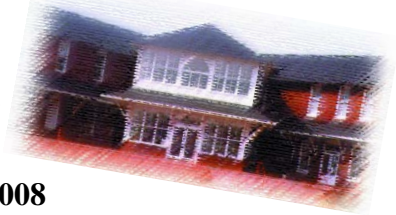




# Newsletter



OCTOBER - DECEMBER 2008

The Arts Council, Inc.  
Smithgall Arts Center

331 Spring Street SW  
P.O. Box 1632 Gainesville, GA 30503-1632

770.534.ARTS (2787)

### 2008 / 2009 Board of Directors

Robin Smith - President

Bill Sanders- 1st Vice President

Arturo Corso- 2nd Vice President

Roger Dailey - Secretary

Bob Pennington - Treasurer

Stan Appleton	Richard Hunt
William Bagwell	Donna Palfrey
Malia Bolt	Randall Robinson
Lori Carter	J. C. Smith
Anna Dempsey	Angela Sparks
Ron Evans	Dinah Wayne
Randall Frost	Brown Wilder

### STAFF

Gladys P. Wyant, Executive Director

Dwight S. Hutchins, Assistant Director

### AFFILIATE ARTS ORGANIZATIONS

Brenau University	Lake Lanier CVB
Crawford W. Long Museum	Lanier Singers Chamber Choir
Dahlonega Ars Council	Longstreet Society
Dawson County Arts Council	Main Street Gainesville
Elachee Nature Science Center	North GA College & State University
Gainesville Ballet Company	NE GA History Center at Brenau University
Gainesville State College	NE GA Writers Club
Gainesville Parks and Recreation Agency	Northwinds Symphonic Band
Gainesville ProMusica Concert Series	Quinlan Visual Arts Center
Gainesville Theatre Alliance	Sautee Nachoochee Community Association
Gainesville Symphony Orchestra	Sounds of Sawnee Concert Band
Georgia Mountains Players	Theatre Wings
Hall County Parks and Leisure Services Historic Holly Theatre	Truett-McConnell College
Interactive Neighborhood for Kids	Voices of North Georgia
	WonderQuest: GTA Theatre for Young Audiences

## 2008-2009 ARTS COUNCILS EVENINGS OF INTIMATE JAZZ CELEBRATES ITS TWELFTH SEASON!!

On Friday, October 24th The Arts Council will launch its 12th Season of Evenings of Intimate Jazz. This season we will welcome back three past performers at Evenings of Intimate Jazz and we will welcome three new ones to make an excellent blend of the familiar with the new.

The Arts Council presents Steve Cunningham Trio in the intimate setting of the Smithgall Arts Center' Jazz Room on Friday, October 24th. We



welcome back 2006-2007 seasons highest rated group the Steve Cunningham Trio. Cunningham rocked the house in his last performance and no one wanted to leave after three hours plus.

Look for more of that good rocking jazz as Steve plays the lap steel as well as nylon guitar, slide Dobro and acoustic slide guitar. Rochester, NY native Steve Cunningham began playing guitar at age 14, where he was influenced by such diverse artists as Led Zeppelin, Pat Metheny, Yes, and the Brecker Brothers, as well as classical and bluegrass music. In 1995 Steve relocated to Atlanta where he began playing the lap steel, immersing himself in the styles of David Lindley, western-swing great Tom Morrell, and Sacred Steel player Aubrey Ghent.

In 2008 Steve released his fourth solo cd, "Slide", an instrumental composition showcasing Steve's talent on the lap steel and slide guitar. The music is a blend of all styles from swampy rock jams to Latin ballads and smoky jazz tributes. This release has been receiving accolades from fans worldwide along with radio airplay that spans the continents. Joining Steve will be Mike Little on piano and vocals with Mike Haid on drums.

The Shawn Megorden Quartet will join Evenings of Intimate Jazz on Saturday, November 15th. Shawn has performed in Gainesville twice, once with the South City Voices/Northwinds Symphonic Band Concert as a part of the 2005-2006 Evenings of Intimate Jazz season, also once with the Gainesville Symphony Orchestra. Shawn will be joined by Paul Fallat on drums, Robert

Strickland, piano and Mark Bynum, bass. Paul



has performed with several groups over the years at Evenings of Intimate Jazz and has also

played with the likes of Sandy Duncan, Joel Grey, Tommy Tune and the Smothers Brothers. Mark attended Berkely Conservatory in Boston and has played with The Robert Ray Orchestra, Col. Bruce Hampton, and Blueground Undergrass. Shawn has opened for Dianne Schurre and has been a featured vocalist at the Fox Theatre, the Ford Theatre and many more. Her solo jazz cd "Cover Girl" is receiving air play around the world.

Following the Christmas and New Year's holidays, Evenings of Intimate Jazz rings in 2009 with the Christian Tamburr Trio on Saturday, January 17th. Christian Tamburr was scheduled to make his Evenings of Intimate Jazz debut during the 2006-2007 season, but due a scheduling conflict with his tour



with Julio Iglesias was unable to make that performance. Christian Tamburr is a multi-instrumentalist, accom-

plished on the piano and trap set as well as world and orchestral percussion. However, his true talent is exhibited on his instrument of choice, the vibraphone. Tamburr has toured throughout Scandinavia. He has performed in St. Petersburg Russia and numerous jazz festivals across the U.S. including Jacksonville Jazz Festival, the New Jersey Jazz Festival, the Coco Beach Jazz Festival, and the Atlanta Jazz Festival and at the Kennedy Center in Washington Christian has performed as a guest artist with Dave Brubeck, as a solo percussionist with Michael Feinstein, and opened for Harry Connick, Jr. Original music from Christian's first album "Move" was released

(Intimate Jazz Continued on Page 2)

(Intimate Jazz Continued on Page 1)

as a part of a Starbucks Gift Set for fall and winter of 2006.

The Kevin Bales Trio will make their Evenings of Intimate Jazz debut on Saturday, February 21st. Winner of the 1994 American Pianist Associations Jazz Piano Competition, Kevin Bales is a graduate of the University



of North Florida and the Florida State University. For the past fifteen years, Kevin has been an integral part of the southeast jazz scene and has performed at nearly every important jazz venue in the region. Additionally, he has performed in the top jazz clubs and festivals across the United States and around the world. Notable performances include the JVC Jazz Festival in New York, The Kennedy Center and Lincoln Center jazz series, The Jazz Bakery in Los Angeles, Yoshi's in San Francisco, and The Toronto Jazz Festival. International performances have included the Moscow Center for the Performing Arts, The Edinborough Festival in Scotland, The Shanghai Jazz Festival in China, and the Hampton Jazz Festival in England. Not only a leader of his own groups, Kevin has also toured and performed with jazz greats Wynton Marsalis, Louie Bellson, Blue Note recording artist Marcus Printup, Grammy winner Eddie Daniels, sax legends Bunky Green and James Moody, Ben Tucker, Nathan Page, Ira Sullivan, The Lincoln Center All-stars and countless others. Appearing on over thirty recordings as a sideman, his first compact disc, "The First Day", was released in 1996 to rave reviews. In 2000, he recorded with trumpeter Marcus Printup. He currently resides in Atlanta and performs with his own group, as well as with MaxJazz recording artist Rene Marie.

In March the Evenings of Intimate Jazz season introduces John McAndrew Trio to Gainesville jazz audience. The John McAndrew Trio performance is Saturday, March 14th. John McAndrew is a storyteller.



He draws pictures on water like an ancient calligrapher. The lyrics float up and into your musical psyche. Describe him as Paul Simon with a smidgen of Harry

Chapin and a dollop of Jimmy Webb. John McAndrew is a piano player. He's a singer. And to complete the picture-throw in songwriter. It's a unique combination that makes John's music. Lyrics are power, says McAndrew. John's "Back When We Rocked and Rolled" is a song that would appeal to 'boomers'. In John's "Give Me New Eyes", it could be the teen voice of Holden Caulfield in "Catcher in the Rye". Born in Rice Lake Wisconsin McAndrew's family traveled around quite a bit. His father, Bill, played saxophone and clarinet with Stan Kenton, and, John wanted to follow in his Dad's footsteps. Without taking a lesson, John taught himself the sax, flute, guitar, harmonica and the piano. Somewhere along the way he fell in love with words-lyrics-the things that breathe life into a song. John's cd "I'll Play All Night Long" is a tribute to his late father and brother Emil. McAndrew describes himself as a 'pops/blues' artist. He says when he's at home in Minnesota-not writing or composing-he listens to jazz. "I love Oscar Peterson, Gene Harris and Randy Newman." It is a passion for telling a tale that is attracting the attention of adult contemporary listeners and blues/pop fans. John McAndrew has come along at a time when the world is searching for its intrinsic "center." John is already there.

The Joe Gransden Quartet will make their return performance at Evenings of Intimate Jazz on Friday, April 17th. Just entering his thirties, Joe Gransden has already performed worldwide and released four CDs. Renowned first for the hard bop approach of his trumpet, Gransden's singing voice has been compared to that of Chet Baker and Frank Sinatra. Not long after high



school, Joe was on the road as a sideman with the big bands of Tommy Dorsey and Glenn Miller. A number of A.F.M. contracted sideman gigs include Barry White, The Moody Blues, Kenny Rogers, The Temptations, Aretha Franklin, The Whispers, etc. "When I first heard Joe five years ago, I immediately thought of Chet," says Jazziz magazine critic James Rozzi, "but lately his voice has taken on its own style with a deeper resonance. His trumpet has always alternated lyricism with an aggressive, angular approach. He has the ability to cover the gamut of emotions. Joe recently performed with Kenny G at Chastain Park in Atlanta and is currently working on a smooth jazz cd with Kenney G as well.

The 2008-2009-season closes on a high note with a special outdoor concert featuring Havana Son on Friday May 22nd. Havana Son features the husband and wife team of Rene and Lillian Herrera along with a percussionist. The sultry sounds of a tropical paradise come to mind when one hears the pulsing rhythms

and sweet melodies of Havana Son. Created by Cuban native Rene Herrera - not only known for being an award winning composer and arranger but also a former Mercury Records recording artist., this world renowned bandleader brings the music to life through his use of piano, vocals, guitar and TRES (traditional Cuban stringed instrument). Rene creates the true Latin sound and willingly shares it with his audience. Rene's wife Lillian Herrera is of Cuban heritage and adds her unique vocal style to create an intoxicating cocktail of Latin and American sounds. Lillian has sung professionally in the classical music world as well as with many Latin bands. By being outdoors there will be plenty of space and opportunity to show off all of your Latin dance moves.



2008-2009 Evenings of Intimate Jazz Series tickets are \$140 (a 20% savings over individual ticket prices) for all seven (7) performances. Individual tickets are \$25 per person. To order your 2008-2009 season tickets you may order online at [www.theartscouncil.net](http://www.theartscouncil.net) and click on Evenings of Intimate Jazz or you can call us at 770-534-2787. As always complimentary glasses, ice, set-ups, coffee and light snacks will be available.

#### POLITICAL SIGNAGE CONFUSING TO A FEW COMMUNITY MEMBERS

It has recently come to our attention that there is a misconception that The Arts Council has political signage on their property at The Arts Council Performing Arts Complex.

The property where political signs are on constant display throughout the current political campaign, the property directly behind the former church, does not belong to The Arts Council nor do we have any control over the signage placed there. We have contacted the responsible parties to request that they be moved to another location on their property so there is no possible confusion, and they indicate that there is no other place to move them.

The Arts Council, Inc. does not support nor endorse any political candidate

## *Smithgall Arts Center Sculpture Garden*

In June of 2008 the Arts Council received ten pieces of sculpture to begin the development of the Smithgall Arts Center Sculpture Garden. The sculptures were donated by Shirley and Bob Bowden. The Art work was installed in late June and July. Pieces include works by Frederick Remington



"Mountain Man", local artist Ferdinand Rosa, Robert Jarrell as well as nationally recognized artist Deborah Masters. Most of the pieces in the

donated collection are contemporary. The sculpture is just the latest donation of art that the Bowden's have made to the Arts Council. Previously Shirley

and Bob had donated many works that began the Arts Council's permanent art collection.

Bob and Shirley were moving from their long time Gainesville residence and wanted to ensure that their sculpture collection would be able to be seen by the public. With the aid and partnership with Jimmy Adams and Adams Transfer and Storage, early one June morning the sculptures were removed from the Bowden home and transported to the Arts Council's Smithgall Art Center for installation. At the time Bob's health was beginning to fail but that didn't deter him in any way from driving his backhoe & digging up these large pieces of art and assisting with the installation process.

Sadly, Bob passed away on August 20th. His memory and legacy will live on in Gainesville and Hall County for the many arts initiatives that he was involved in over the past 20+ years.

The Arts Council expresses its gratitude and thanks to Adams Transfer and Storage for their assistance in moving the sculpture pieces from Shirley and Bob's home to the



Smithgall Arts Center.

Stop by the Smithgall Arts Center and view the beginnings of our outdoor sculpture garden. Hours: Mon-Fri 9am to 5pm. For additional information call 770-534-2787.

### *Voices of North Georgia: "Let's Go to the Movies"*

Kicking off our 40th anniversary season, Voices of North Georgia, a fifty voice community chorus, will present "Let's Go to the Movies!" Selections include theme songs from films such as "The Phantom of the Opera," "Titanic," "West Side Story," "Oh Brother, Where Art Thou?" and "The Pink Panther."

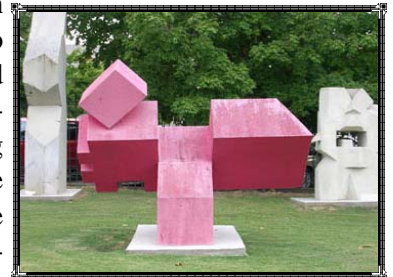
Performances will be on Friday, October 17 at 7:30 PM and Sunday, October 19 at 3:00 PM at Lakewood Baptist Church, 2235 Thompson Bridge Rd. in Gainesville. Tickets are \$15 (General Admission), \$12 (Seniors & Students), and \$5 (children 11 and under) and may be purchased at The Arts Council, the door, or by calling 678-943-7255.

See you at the movies!



### **BOB BOWDEN MEMORIAL GARDEN FUND ESTABLISHED**

The Arts Council will use the recent sculpture donations from Shirley and Bob Bowden as the center piece of the Robert Bowden Memorial Garden. Bob recently passed away and The Arts Council has chosen to honor this long time benefactor of The Arts Council and the Gainesville arts community with the development



of a memorial garden on the grounds of The Arts Council's Smithgall Arts Center. The garden will encompass three of the newly installed sculptures in the northwest quadrant of the property. Arts Council Executive Director Gladys Wyant said that the garden will reflect the spirit and graciousness of Bob Bowden, her long time friend and mentor.

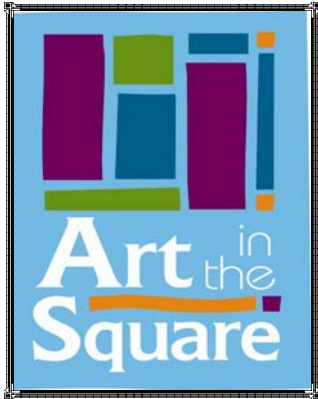
To make a donation to the Bob Bowden Memorial Garden fund, send your check to The Arts Council at P. O. Box 1632 Gainesville, GA 30503 or you may make a donation with a credit card via the telephone 770-534-2787.

## FIFTH ANNUAL ART IN THE SQUARE FESTIVAL

The 5th Annual Art in the Square Festival is an event organized to support local artists and to increase awareness in the community of all the wonderful artists in our area. For one day only, Saturday, October 4th, professional and amateur artists from Gainesville/Hall County and the surrounding region will be displaying and selling original art work in all media. There will be a Children's Artist Market, arts and crafts for kids, live music and performers, clowns, face painting, and great food from the restaurants around the Square.

The Art in the Square Festival is on the downtown square in Gainesville from 10:00am to 5:00pm and is free and open to the public.

For information contact Main Street Gainesville at 770-297-1141 or [www.downtowngainesville.com](http://www.downtowngainesville.com).



## WONDERQUEST PRESENTS SNOW DRAGON

SNOW DRAGON, an original script inspired by various pieces of children's fantasy literature, is set in mythical Tsarist Russian town surrounded by snowy woods and mountains. There, on a mountain so high that the ice never melts, a mysterious Snow Dragon lives. Sleet falls when he flies, and his breath is a dagger of ice. But to one girl, found in the snow as a baby, and forever different from those around her, Snow Dragon calls with the voice of a friend. When the Fire Dragon erupts from the belly of the earth, can Snow Dragon save his human friend . . . or must she save him?



Snow Dragon will be presented in Brenau University's Pearce Auditorium on Oct 3-4 and 10th. Performances are at 7:30pm on Oct 3rd and 10th and at 2:30pm on Oct 4th. Tickets are \$10-\$12 for adults and \$7-\$8 for students of any age.

Snow Dragon is written and directed by Gay Hammond. Costumes were designed by Jeannie Crawford and Larry Cook served as set designer.

For Information call 678-717-3624 or [www.gainesvilletheatrealliance.org](http://www.gainesvilletheatrealliance.org). WonderQuest is GTA's theater for young audiences.

## 61st Annual Members Exhibition Quinlan Visual Arts Center

The most popular tradition in the history of the Quinlan, the annual Members' Exhibition showcases the work of the different member-artists from Gainesville, Atlanta and beyond and each year marks another season of unparalleled excellence in visual arts programming. The exhibition opens on October 16th and will be on view through November 30th and is a dazzling and eclectic array of art in all media including landscapes, abstracts, still life compositions, portraits, ceramics, wood turnings and much, much more. The opening reception will be Thursday, October 16th from 5:30 p.m. until 7:30 p.m. Ribbons will be awarded for Best of Show, First, Second, and Third places as well as several Honorable Mentions.

Also from the Quinlan is the 2nd Annual Salon on Saturday, October 25th. It is an evening celebrating the arts, a gathering of wits, artists and musicians, bringing together artists and community for an intimate evening. It was one of the most

talked about parties in 2007 and we are looking forward to this event again this



fall. This year the event will be at the home of Dr. and Mrs. Jeffrey Payne. Artists to be present include Lorraine Christie, Liefje Smith and Clayton Santiago. Musical duo "The Mona Lisas" will be performing. Tickets are \$200 per couple and the event is black tie. To R.S.V.P please contact Quinlan staff at (770) 536-2575.

Artist Gregg Kruetz will lead a week-long workshop November 7-11. The

workshop is entitled "Oil Painting: Portrait and Still Life". Fee for this outstanding workshop is \$600 plus \$30 model fee. Please call the Quinlan at 770-536-2575 to make sure spaces is still available.

Opening on December 4th will be an exhibition featuring works from the Plein Air Painters of Georgia. Along with this exhibit will be "Everyone is a Work of Art" featuring works in bronze by local artist Gregory Johnson. In addition works by still life artist Bert Beirne and the winners of the Art League Invitational.

Continuing at the Quinlan is "MERGE" a collaboration with the Matre Gallery is exhibited at the Quinlan Visual Arts Center featuring works by Steve Penely. Also on exhibition during these dates are works by Jonathan Roy: *Interlude* and Lorraine Christie: *Pieces of Me*.

For information regarding any of the above activities at the Quinlan call 770-536-2575 or [www.quinlanartscenter.org](http://www.quinlanartscenter.org).



# ARTS CALENDAR

This bimonthly Arts Calendar is produced by The Arts Council, Inc. To include affiliate arts organization events, call 770.534.2787 or mail your press releases and photos to: The Arts Council, Inc., P. O. Box 1632, Gainesville, GA 30503 two months preceding your event. Email: [info@theartscouncil.net](mailto:info@theartscouncil.net). Fax: 770.534.2973

## PERFORMANCES/CLASSES

**OCT 1, 8, 15 22, 29 BLUE SKY CONCERTS** are presented by Main Street Gainesville on the downtown square at noon. Performers: Danny Ray Cole, Shades of Gray, Red Dirt Band, Riverside Drive and Jelly Roll. Admission: Free. Information: 770-297-1141 or [www.downtowngainesville.com](http://www.downtowngainesville.com).

**OCT 3-4, 10 SNOW DRAGON** is presented by WonderQuest GTA for young audiences at Pearce Auditorium Brenau University. School performances Oct 2-3 and 8-10. Tickets: Adults/seniors \$10-\$12, students \$7-\$8. Performance: 7:30pm Oct 3 & 10 and 2:30pm Oct 4. Information and tickets: 678-717-3624 or [www.gainesvilletheatrealliance.org](http://www.gainesvilletheatrealliance.org).

**OCT 3 LATIN GALA 2008** is presented by the Gainesville Multicultural Committee and the Quinlan Visual Arts Center at 8pm. Celebrate the cultural diversity of our community at an evening of live music, dancing, tapas. Admission: \$50 per person. Information: 770-536-2575.

**OCT 4 ART IN THE SQUARE JURIED ART SHOW** is presented by Main Street Gainesville and the Art in the Square Association. Show Hours: 10am to 5pm. Information: 770-297-1141 or [www.downtowngainesville.com](http://www.downtowngainesville.com).

**OCT 7 BRUCE BURCH & FRIENDS: A TRIBUTE TO JOHN JARRARD** annual concert presented at The Arts Council Smithgall Arts Center. Performance: 7PM. Information: 770-535-7880 ext. 221 or online at [www.johnjarrardconcert.com](http://www.johnjarrardconcert.com).

**OCT 10-12 TOYS THROUGH THE AGES** is an exhibit at Northeast Georgia History Center at Brenau University. Admission: Free. Information: 770-297-5900.

**OCT 12 PIONEER LIFE - FAMILY SUNDAY** is presented at the Northeast Georgia History Center at Brenau

University from 1:00pm to 4:00pm featuring demonstrations and crafts of the pioneers of Northeast Georgia. Admission: Free. Information: 770-297-5900.

**OCT 17 & 19 LET'S GO TO THE MOVIES** kicks off the 40th anniversary season of the Voices of North Georgia at Lakewood Baptist Church. Performances: 7:30pm Oct 17 and 3:00pm Oct 19. Admission: \$15 adults, \$12 seniors and students, \$5 children 11 and under. Information: 678-943-7255.

**OCT 17 GAINESVILLE SYMPHONY ORCHESTRA YOUNG PEOPLE'S CONCERT** is presented in Pearce Auditorium-Brenau University. Performances: 9:30am and 11:00am. Conductor: Gregory Pritchard. Tickets: \$5. Information: 770-532-5727 or [www.gainesvillesymphony.com](http://www.gainesvillesymphony.com).

**OCT 18 GAINESVILLE SYMPHONY ORCHESTRA FALL CLASSICAL CONCERT: FRENCH MASTER WORKS** is presented by the Gainesville Symphony Orchestra at Pearce Auditorium-Brenau University. Conductor: Gregory Pritchard. Performance: 7:30pm. Tickets: \$30 adult; \$27 senior adult; \$12 student. Information: 770-532-5727 or [www.gainesvillesymphony.com](http://www.gainesvillesymphony.com).

**OCT 18 EVENING STAR CONCERT SERIES** is presented at the Sautee Nacoochee Community Center Theatre at 8PM. Featured performer(s): Small Potatoes, Greg Klyma opens. Tickets: \$15 members, \$20 non-members. Information: 706-887-3300 or [www.snca.org](http://www.snca.org).

**OCT 23 KHALED HOSSEINI** author of "Kite Runner" and "A Thousand Splendid Suns" speaking in Pearce Auditorium at 7:30pm. Public reception and book signing at 8:30pm. Information: [www.brenau.edu](http://www.brenau.edu).

**OCT 24-25 5TH ANNUAL GHOST WALK** is presented by the Northeast Georgia History Center at Brenau University featuring 6 ghost stories narrated by professional storytellers. Walks

depart the History Center at 6:00pm, last walk departs at 8:00pm. Admission: \$6 for History Center members and \$10 for non-members. Information: 770-297-5900,

**OCT 24 JAZZ DEPOT...EVENINGS OF INTIMATE JAZZ** is presented by the Arts Council at the Smithgall Arts Center. Artist: Steve Cunningham. Performance: 8PM. Tickets: \$25 Information: 770.534.2787 or [www.theartscouncil.net](http://www.theartscouncil.net)

**OCT 25 SALON** is an intimate evening celebrating the arts at the Quinlan Visual Arts Center. Admission: \$200 per couple. Information: 770-526-2575 or [www.quinlanartscenter.org](http://www.quinlanartscenter.org).

**OCT 27 MICHELLE MARTIN IN RECITAL** in Brenau University's Pearce Auditorium. Performance: 8pm. Information: [www.brenau.edu](http://www.brenau.edu).

**OCT 28 THE ITALIAN SAXOPHONE QUARTET** Gainesville ProMusica Concert Series fall Concert presented at



Brenau University Pearce Auditorium. Artist: The Italian Saxophone Quartet. Performance: 7:30pm. Tickets: \$40 for the season, single concert tickets \$15 at the door students free with ID.

Information: 770-535-7342 or [www.gainesvillepromusica.com](http://www.gainesvillepromusica.com).

**NOV 7-8 AN EVENING OF DANCE** is presented in Pearce Auditorium. Tickets: \$6 general admission, \$4 seniors, children 12 and under; free for Brenau faculty, staff & students. Information: 770-534-6245.

**NOV 9 HOMEFRONT HOLIDAYS-FAMILY SUNDAY** is presented at the Northeast Georgia History Center at

Brenau University from 1:00pm to 4:00pm. Program features hands-on activities including V-mail and Propaganda Posters and more. Admission: Free. Information: 770-297-5900.

**NOV 11-22 THOROUGHLY MODERN MILLIE** is presented by Gainesville Theatre Alliance in the Hosch Theatre Brenau University. In this Tony Award-winning play, Millie Dillmount sets out to see the world in the rip-roaring Twenties. Tickets: adults \$18-\$22; seniors \$16-\$20; students \$14-\$16. Information and tickets: 678-717-3624 or [www.gainesvilletheaterealliance.org](http://www.gainesvilletheaterealliance.org).

**NOV 14 GAINESVILLE SYMPHONY ORCHESTRA CHAMBER ORCHESTRA: STRING SERENADE** is presented in Pearce Auditorium-Brenau University. Guest Conductor: Bruce Sorrell. Performance: 7:30pm. Tickets: \$30 adult, \$27 senior adult; \$12 student. Information: 770-532-5727 or [www.gainesvillesymphony.com](http://www.gainesvillesymphony.com)

**NOV 14 & 16 LANIER CHAMBER SINGERS CHRISTMAS CONCERT** is presented in Grace Episcopal Church. Enjoy a concert of glorious a cappella choral music, traditional Christmas carols and an audience sing-along. Performance: 8pm Nov 14 & 4pm Nov 16. Admission: \$10. Information: [www.lanierchambersingers.org](http://www.lanierchambersingers.org).

**NOV 15 JAZZ DEPOT...EVENINGS OF INTIMATE JAZZ** is presented by the Arts Council at the Smithgall Arts Center. Artist: Shawn Megorden Quartet. Performance: 8PM. Tickets: \$25. Information: 770.534.2787 or [www.theartscouncil.net](http://www.theartscouncil.net)

**NOV 17 JAN GRISSOM - SOPRANO** in concert presented by the Brenau's International Opera Center in Pearce Auditorium. Tickets: \$7.50. Performance: 8pm. Information: 770-531-3119.

**NOV 22 EVENING STAR CONCERT SERIES** is presented at the Sautee Nacoochee Community Center Theatre at 8PM. Featured performer(s): Craig Carothers and John William Davis. Tickets: \$15 members, \$20 non-members. Information: 706-887-3300 or [www.snca.org](http://www.snca.org).

**DEC 5-7 THE NUTCRACKER** is presented by the Gainesville Ballet Company in Pearce Auditorium-Brenau University. Performances: 7:30pm Fri & Sat; 2:00pm

Sat & Sun. Tickets: \$24 adults, \$20 seniors, \$16 students/children, \$5 Brenau faculty, staff and students with valid ID. Information: 770-532-4241 or [www.gainesvilleballet.org](http://www.gainesvilleballet.org).

**DEC 8 BRENAU CHAMBER CHOIR CONCERT** is presented Pearce Auditorium-Brenau University. Concert features the choir's Biltmore Estate program. Gainesville State College Choir also performs. Both choirs perform the electrifying Pinkham Christmas Cantata. Admission: Free. Information: [www.brenau.edu](http://www.brenau.edu).

**DEC 14 DECORATING WITH HOME-CRAFTED ORNAMENTS-FAMILY SUNDAY** is presented at the Northeast Georgia History Center at Brenau University from 1:00pm to 4:00pm. Make ornaments to decorate a special History Center Christmas Tree. Hot Chocolate, snacks and stories are provided. Admission: Free. Information: 770-297-5900.

## EXHIBITS/OPEN HOUSES

**AUG 12-OCT 12 ANDY WARHOL: A PHOTOGRAPHIC LEGACY** is exhibited in the Leo Castelli Gallery of the John Burd Performing Arts Center. For Gallery Hours call 770-534-6263. Exhibit closed Aug 31-Sept 1. Information: 770-534-6263 or [www.brenau.edu](http://www.brenau.edu).

**AUG 14-OCT 12 "MERGE"** a collaboration with the Matre Gallery is exhibited at the Quinlan Visual Arts Center. Featuring works by Steve Penely. Also on exhibition during these dates are works by Jonathan Roy and Lorraine Christie. Admission: Free. Gallery Hours: Mon-Fri 9am to 5pm, Sat 10am to 5pm, Sun 12pm to 4pm. Information: 770-536-2575 or online [www.quinlanartscenter.org](http://www.quinlanartscenter.org).

**AUG 18-OCT 12 LAND AND SEA: AMELIA AND THE SOUTHERN SEA ISLANDS** is an exhibition of works by Lee Anne White in the Simmons Visual Arts Center - President's Gallery. For Gallery Hours call 770-534-6263. (Closed Aug 31-Sept 1) Information: 770-534-6263 or [www.brenau.edu](http://www.brenau.edu).

**AUG 21-OCT 2 SOUTHERN PRINT-MAKING BIENNALE EXHIBITION** is at the Bob Owens Art Gallery North GA College & State University. Reception: Sept 18 5:00pm to 6:30pm. Gallery Hours/ Information call 06-864-1423 or [www.ngcsu.edu](http://www.ngcsu.edu).

**AUG 26-OCT 5 BODY IMAGE: BEYOND APPEARANCE** is an exhibition in the Simmons Visual Arts - Sellars Gallery. For Gallery Hours call 770-534-6263. (Closed Aug 31-Sept 1) Information: 770-534-6263 or [www.brenau.edu](http://www.brenau.edu).

**OCT 16-NOV 30 61ST ANNUAL MEMBERS' EXHIBITION** is presented at the Quinlan Visual Arts Center. Exhibit judged by Bill Eiland, GA Museum of Art. Admission: Free. Gallery Hours: Mon-Fri 9am to 5pm, Sat 10am to 5pm, Sun 12pm to 4pm. Information: 770-536-2575 or online [www.quinlanartscenter.org](http://www.quinlanartscenter.org).

**OCT 21-DEC 14 BRENAU FACULTY EXHIBIT: DISTINCT REVELATIONS** is exhibited in the Simmons Visual Arts Center-Presidents Gallery. Reception: Nov 20th 6:30pm to 8pm. Admission: Free. Gallery Hours: call 770-534-6263. Information: 770-534-6263 or [www.brenau.edu](http://www.brenau.edu). (Closed: Nov 26-30)

**OCT 21-DEC 14 LOIS MAILOU JONES: THE EARLY WORKS** is exhibited in the Simmons Visual Arts Center - Sellar's Gallery. Reception: Nov 20th 6:30pm to 8pm. Admission: Free. Gallery Hours: call 770-534-6263. Information: 770-534-6263 or [www.brenau.edu](http://www.brenau.edu). (Closed: Nov 26-30)

**NOV 11-JAN 25 EXHIBIT: MID-CENTURY MODERN** is an exploration of mid-20th century art and design in the Leo Castelli Gallery - John S. Burd Center for the Performing Arts. Reception: Nov 20th 6:30pm to 8pm. Admission: Free. Gallery Hours: call 770-534-6263. Information: 770-534-6263 or [www.brenau.edu](http://www.brenau.edu). (Closed: Nov 26-30 and Dec 21-Jan 5)

Nov 14 GSO Chamber Concert  
**DEC 4-FEB 15 PLEIN AIR PAINTERS OF GEORGIA** will exhibit at the Quinlan Visual Arts Center.



Also showing is "Everyone is a Work of Art" featuring bronzes by Gregory Johnson. Also showing is still life artist Bert Beirne and the Art League

Invitational winners exhibition. Admission: Free. Gallery Hours: Mon-Fri 9am to 5pm, Sat 10am to 5pm, Sun 12pm to 4pm. Information: 770-536-2575.

## BRENAU UNIVERSITY GALLERIES EXHIBITS HIGHLIGHT DIFFERENT STYLES, DIFFERENT ERAS

Brenau University Galleries announce three new upcoming exhibitions: Lois Mailou Jones: The Early Works, Distinct Revelations: Brenau Faculty Exhibit, and Mid-Century Modern.

*Lois Mailou Jones: The Early Works* will be on exhibit October 21 through December 14, 2008 in the Simmons Visual Arts Center. Lois Mailou Jones was one of the first female African-American painters to depict African imagery in her work and has been heralded as one of the most important artists of the 20th century. Jones' works are included in the permanent collections of the Metropolitan Museum of Art, the National Museum of American Art, the Hirshhorn Museum and the Museum of Fine Arts, Boston, among other major collections. Work in the exhibition is on loan from the Lois Mailou Jones-Pierre Noel Trust. On display are nearly 50 designs for fabric and wallpaper created at the outset of her seven decade career.

*Distinct Revelations: Brenau Faculty Exhibit* is on view October 21 through

December 14, 2008 in the Presidents Gallery, on the second floor of the Pearce



Auditorium building. This year's faculty exhibit will be the embodiment of information, ideas, self expression, humor, and personal values of the Brenau University Art and Design faculty. These artists' and educators' perceptions, responses and experiences are revealed through their creative disciplines including fashion, photography, drawing, painting, graphic design, interior design, ceramics and sculpture.

*Mid-Century Modern* opens November 11, 2008 and will run through January 25, 2009 in the Leo Castelli Art Gallery, in the John S. Burd Center for the Performing Arts. This is an exhibition of fashion and design from the decade of the 1950's. The show's purpose is to illustrate the transitions in American and Western European art and design during this period of time. A panel discussion will be held at 5:30 - 6:30 pm on Thursday, November 20, in the Disque Lecture Hall in the Burd Center for the Performing Arts.

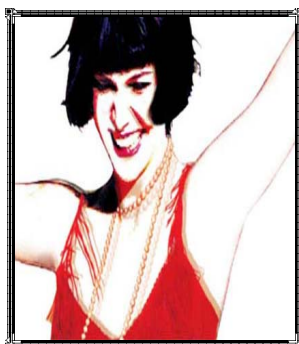
A gallery reception will be held from 6:30 - 8 pm, Thursday, November 20, following the Mid-Century Modern panel discussion. All exhibits and gallery spaces will be open to visitors.

For Gallery Hours call 770-534-6263. Exhibits are closed November 26-30 and December 21st through January 5th. For more information visit [www.brenau.edu/discover/galleries/calendar.cfm](http://www.brenau.edu/discover/galleries/calendar.cfm)

## THOROUGHLY MODERN MILLIE OPENS GAINESVILLE THEATRE ALLIANCE'S 2008-2009 SEASON

Gainesville Theatre Alliance's Thoroughly Modern Millie offers roaring Charlestons in lieu of Wall Street blues November 11th through November 22nd.

Fresh off the bus from Salina, Kansas, Millie Dillmount, does not know about the



looming economic collapse. With fearlessness and a suitcase containing a decidedly un-cosmopolitan wardrobe, this young lady arrives in the Big City determined to experience life and stake her claim on the world in the rip-roaring Twenties.

Filled with frisky flappers, dashing leading men and a dragon-lady of a villainess that audiences will love to hate, GTA's upcoming musical Thoroughly Modern Millie will dazzle senses and capture

hearts. As sets fly in and out and the orchestra surges, toes will be tapping on stage and in the audience for this Tony-award winning play directed by GTA Artistic Director Jim Hammond.

The lead role of Millie Dillmount will be played by Brenau senior Allie Payton, who played Eve in last season's musical Children of Eden. Atlanta professional actresses Tess Kincaid will play the role of Mrs. Meers and Keena Redding Hunt, a graduate of the GTA program, will play nightclub singer Muzzy. Keeping up with these powerhouse voices are GTA regulars Will Bradley and Zechariah Pierce, both Brenau seniors, and Gainesville College sophomore Jas Sams as Miss Dorothy.

Tickets are \$20-22 for adults, \$18-20 for seniors (65 and up) and \$14-16 for students depending on seat location. Patrons can select and purchase their seats on the website, [www.gainesville THEATRE alliance.org](http://www.gainesvilleTHEATREalliance.org), or by calling the GTA Box Office at 678-717-3624, Monday through Friday from 9am to 4pm.

The Gainesville Theatre Alliance's *Repertory Company*, a small touring group made up of five of their strongest actors, will offer a free showcase performing two plays before they hit the road to bring the shows to hundreds of north Georgia school children and community groups. The showcase will be at 7:00pm, Sunday, October 19th, in Gainesville State College's Ed Cabell Theatre.

The group typically offers one show for elementary school audiences and another for older audiences, based on classic literature that students have studied and discussed ahead of time. These shows travel to schools, community centers, libraries and hospitals for a small fee.

*Wiley and the Hairy Man* will showcase at 7:00pm, which is aimed at younger audiences, and an adaptation of Moliere's *The Miser*, intended for older audiences, at 8:30pm.

To book this group, email Repertory Company Manager Zechariah Pierce at [zpierce@brenau.edu](mailto:zpierce@brenau.edu).

## GAINESVILLE SYMPHONY ORCHESTRA "FRENCH MASTERWORKS"

The Gainesville Symphony Orchestra opens its 2008-2008 season on Saturday, October 18 with "French Masterworks" for its Fall Classical Concert. When you listen to classical music, what do you SEE? Around the end of the 19th century through the early part of the 20th century there was a famous artistic movement in France known as Impressionism, where the emphasis of paintings was directed more towards the colors used rather than specific details of the images.



During this same time frame, French composer Debussy and Ravel did the same thing with their music. They emphasized tone "colors," featuring unusual instruments of the orchestra as well as exploiting the extreme ranges of the more common orchestral instruments. The Fall Classical concert features these composers along with some of the great French romantics. Selections to be performed include: Debussy's *Prelude: Afternoon of a Faun*; Ravel's *Pavane for a Dead Princess*; Dukas' *The Sorcerer's Apprentice*; and Saint-Saëns *Symphony No. 3 in c minor, Op. 78 "Organ"*. Gregory Pritchard will be conducting the Gainesville Symphony Orchestra.

On November 14th the GOS Chamber Orchestra will present "String Serenade." Bruce Sorrell will be the guest conductor and featuring violinist Ken Lambert. Selections to be played include: *Violin Concerto in a minor* by Bach; "*Fall*" from the *Four Seasons* by Vivaldi - Ken Lambert, Violin; *Irish Tune from County Derry* by Grainger; and, Tchaikowsky's *Serenade for Strings*.

All Gainesville Symphony Orchestra performances are in Pearce Auditorium at Brenau University (except the Patriotic Pops Concert) and begin at 7:30pm. 2008-2009 Season tickets are \$108 for adults, \$97 for senior adults, and \$43 for students. Individual tickets are \$30 for adults, \$27 for senior adults and \$12 for students for each performance. Season ticket purchasers receive a 10% discount over individual ticket purchases. For more information call 770-532-5727 or [www.gainesvillesymphony.com](http://www.gainesvillesymphony.com).

## The "Nutcracker" Gainesville Ballet Company

The Gainesville Ballet Company's production of "The Nutcracker" returns to Brenau's Pearce Auditorium Dec. 5 - Dec. 7. This performance opens the 35th season of the Gainesville Ballet Company, under the direction of artistic director, Diane Callahan. "The Nutcracker" is a popular holiday tradition in North Georgia for both children and adults.

Performers for the 2008 "Nutcracker" include Rommie Stalnaker who danced with Gainesville Ballet Company during her college years at Brenau. She has returned to dance with the GBC once again as the Sugar Plum Fairy; and she will also be performing in the "Skaters Trio."

Michelle Santana, in her second year at Brenau University and GBC, is performing as the Dewdrop Fairy. Michelle is also performing demi-soloist role in "Spirit of Christmas." Also in his second year is Derrick Smith. He is a soloist in "Skater Trio," "Russian," "Spanish," and "Candy Canes."



Peter Swan returns for his eighth season with the Gainesville Ballet Company as a principal dancer in the roles of Snow Prince and the Sugar Plum Cavalier. Guest artist Vincas Green returns in the role of Uncle Drosselmeyer and teams with Jolie Long in the role of "Arabian."

Hannah Patten, in her third season with GBC, is performing the role of Snow Queen for the second time. Jessica Shilling, will be the performing soloist in "Spanish" and demi-soloist in "Waltz of the Flowers."

New to the company this year is Brelin Zimmerman. Brelin will be featured in "Skater's Trio," "Marzipan," and "Candy Canes." Also in her first season is Sally Justus. Sally can be seen performing in "Russian," and "Waltz of the Flowers."

The Gainesville Ballet Company Apprentices and the Junior Company are also an important part of "The Nutcracker" performance. They perform "Clara's Friends", "Mother Ginger", "Sunday Skaters", "Candy Canes," and "Neopolitan."

The Nutcracker performances are Friday, Dec. 5 at 7:30, Saturday, Dec. 6 at 2:00 and 7:30, and Sunday at 2:00. For ticket information, call 770-532-4241 or visit the website at [www.gainesvilleballet.org](http://www.gainesvilleballet.org).

THE  
ARTS  
COUNCIL

P. O. Box 1632

Gainesville, GA 30503

Non-Profit Org.  
U.S. Postage  
PAID  
Gainesville, GA  
30501 Permit  
No. 52