



Highlights of events sponsored by The Arts Council, Inc. and/or Affiliate Arts Organizations

2008-2009 ARTS COUNCIL'S EVENINGS OF INTIMATE JAZZ

The *Shawn Megorden Quartet* joins Evenings of Intimate Jazz on **Saturday, November 15th**. Shawn has performed in Gainesville twice, once with the South City Voices/Northwinds Symphonic Band Concert as a



part of the 2005-2006 Evenings of Intimate Jazz season, also once with the Gainesville Symphony Orchestra. Shawn will be

joined by Paul Fallat on drums, Robert Strickland, piano and Mark Bynum, bass. Paul has performed with several groups over the years at Evenings of Intimate Jazz and has also played with the likes of Sandy Duncan, Joel Grey, Tommy Tune and the Smothers Brothers. Mark attended Berkely Conservatory in Boston and has played with The Robert Ray Orchestra, Col. Bruce Hampton, and Blueground Undergrass. Shawn has opened for Dianne Schurre and has been a featured vocalist at the Fox Theatre, the Ford Theatre and many more. Her solo jazz cd "Cover Girl" is receiving air play around the world.

The remaining performances for the 2008-2009 Evenings of Intimate Jazz are *Christian Tamburr Quartet* on **January 17th**.

In February of 2007, Christian joined Latin vocal star Julio Iglesias performing as his featured pianist and shares as musical director. Although rooted



in jazz, Christian's ability to be diverse in the music industry has allowed him to be successful in multiple genres of performance and recording. The world tour has included stops throughout the US, Mexico, Argentina, Paraguay, The Dominican Republic, Portugal, Sweden, Latvia, Lithuania, France, Spain, and Monaco, South Africa... just to name a few.

The Kevin Bales Trio makes their debut on February 21st. On **March 14th** the *John McAndrew Trio* will make their debut at Evenings of Intimate Jazz. **April 17th** Joe Grandsen makes his return to Gainesville with the *Joe Grandsen Quartet*. On **May 22nd** the 2008-2009 season ends with the *Havana Son Trio*. This concert will be outdoors at the Smithgall Arts Center providing plenty of space for you to showcase your best Latin dance moves.

Individual tickets are **\$25** per person. To order your 2008-2009 tickets you may order online at www.theartscouncil.net and click on Evenings of Intimate Jazz or you can call us at 770-534-2787. As always complimentary glasses, ice, set-ups, coffee and light snacks will be available.

PERFORMANCES/CLASSES

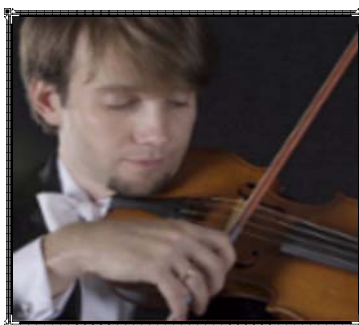
NOV 7-8 AN EVENING OF DANCE is presented in Pearce Auditorium. Tickets: \$6 general admission, \$4 seniors, children 12 and under; free for Brenau faculty, staff & students. Information: 770-534-6245.

NOV 9 HOMEFRONT HOLIDAYS-FAMILY SUNDAY is presented at the Northeast Georgia History Center at Brenau University from 1:00pm to 4:00pm. Program features hands-on activities including V-mail and Propaganda Posters and more. Admission: Free. Information: 770-297-5900.

NOV 11-22 THOROUGHLY MODERN MILLIE is presented by Gainesville Theatre Alliance in the Hosch Theatre Brenau University. In this Tony Award-winning play, Millie Dillmount sets out to see the world in the rip-roaring Twenties. Tickets: adults \$18-\$22; seniors \$16-\$20; students \$14-\$16. Information and tickets: 678-717-3624 or www.gainesvilletheatrealiance.org.

NOV 14 GAINESVILLE SYMPHONY ORCHESTRA CHAMBER ORCHESTRA: STRING SERENADE is presented in

Pearce Auditorium-Brenau University. Guest Conductor: Bruce Sorrel. Ken Lambert-violin. Performance: 7:30pm. Tickets: \$30 adult, \$27 senior adult; \$12 student. Information:



770-532-5727 or www.gainesvillesymphony.com

NOV 14 & 16 LANIER CHAMBER SINGERS CHRISTMAS CONCERT is presented in Grace Episcopal Church. Enjoy a concert of glorious a cappella choral music, traditional Christmas carols and an audience sing-along. Performance: 8pm Nov 14 & 4pm Nov 16. Admission: \$10. Information: www.lanierchambersingers.org.

NOV 15 JAZZ DEPOT...EVENINGS OF INTIMATE JAZZ is presented by the Arts Council at the Smithgall Arts Center. Artist: Shawn Megorden Quartet. Performance: 8PM. Tickets: \$25. Information: 770.534.2787 or www.theartscouncil.net

NOV 17 JAN GRISSOM - SOPRANO in concert presented by the Brenau's International Opera Center in Pearce Auditorium. Tickets: \$7.50. Performance: 8pm. Information: 770-531-3119.

NOV 22 EVENING STAR CONCERT SERIES is presented at the Sautee Nacoochee Community Center Theatre at 8PM. Featured performer(s): Craig Carothers and John William Davis. Tickets: \$15 members, \$20 non-members. Information: 706-887-3300 or www.snca.org.



DEC 5-7 THE NUTCRACKER is presented by the Gainesville Ballet Company in Pearce Auditorium-Brenau University. Performances: 7:30pm Fri & Sat; 2:00pm Sat & Sun. Tickets: \$24 adults,

\$20 seniors, \$16 students/children, \$5 Brenau faculty, staff and students with valid ID. Information: 770-532-4241 or www.gainesvilleballet.org.

DEC 8 BRENAU CHAMBER CHOIR CONCERT is presented in Pearce Auditorium-Brenau University. Concert features the choir's Biltmore Estate program. Gainesville State College Choir also performs. Both choirs perform the electrifying Pinkham Christmas Cantata. Admission: Free. Information: www.brenau.edu.

DEC 14 DECORATING WITH HOME-CRAFTED ORNAMENTS-FAMILY SUNDAY is presented at the Northeast Georgia History Center at Brenau University from 1:00pm to 4:00pm. Make ornaments to decorate a special History Center Christmas Tree. Hot Chocolate, snacks and stories are provided. Admission: Free. Information: 770-297-5900.

EXHIBITS/OPEN HOUSES

OCT 16-NOV 30 61ST ANNUAL MEMBERS' EXHIBITION is presented at the Quinlan Visual Arts Center. Exhibit judged by Bill Eiland, GA Museum of Art. Admission: Free: Gallery Hours: Mon-Fri 9am to 5pm, Sat 10am to 5pm, Sun 12pm to 4pm. Information: 770-536-2575 or online www.quinlanartscenter.org.

OCT 21-DEC 14 BRENAU FACULTY EXHIBIT: DISTINCT REVELATIONS is exhibited in the Simmons Visual Arts Center-Presidents Gallery. Reception: Nov 20th 6:30pm to 8pm. Admission: Free: Gallery Hours: call 770-534-6263. Information: 770-534-6263 or www.brenau.edu. (Closed: Nov 26-30)

OCT 21-DEC 14 LOIS MAILOU JONES: THE EARLY WORKS is exhibited in the Simmons Visual Arts Center - Sellar's Gallery. Reception: Nov 20th 6:30pm to 8pm. Admission: Free: Gallery Hours: call 770-534-6263. Information: 770-534-6263 or www.brenau.edu. (Closed: Nov 26-30)

NOV 11-JAN 25 EXHIBIT: MID-CENTURY MODERN is an exploration of mid-20th century art and design in the Leo Castelli Gallery - John S. Burd Center for the Performing Arts. Reception: Nov 20th 6:30pm to 8pm. Admission: Free: Gallery Hours: call 770-534-6263. Information: 770-534-6263 or www.brenau.edu.

(Closed: Nov 26-30 and Dec 21-Jan 5)

DEC 4-FEB 15 PLEIN AIR PAINTERS OF GEORGIA will exhibit at the Quinlan Visual Arts Center. Also showing is "Everyone is a Work of Art" featuring bronzes by Gregory Johnson. Also showing is still life artist Bert Beirne and the Art League Invitational winners exhibition. Admission: Free: Gallery Hours: Mon-Fri 9am to 5pm, Sat 10am to 5pm, Sun 12pm to 4pm. Information: 770-536-2575.

